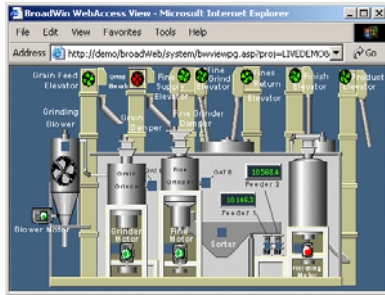


BroadWin WebAccess Features

Web browser software for HMI and SCADA

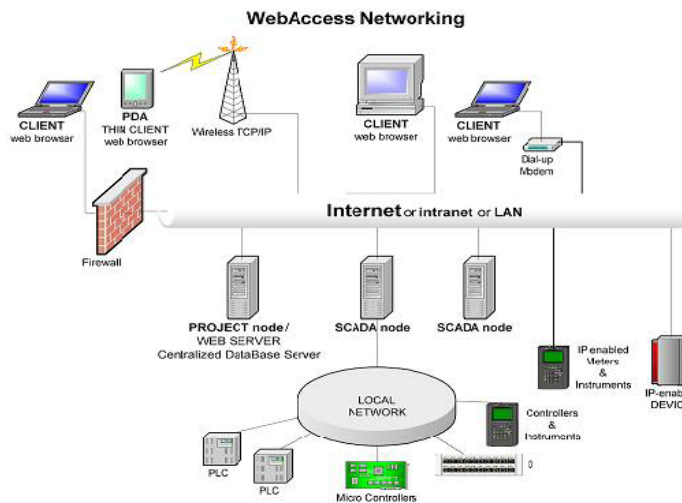
Web Browser Client to View and Control

Using a standard Web browser, users can view and control automation equipment used in industrial, manufacturing, process and building automation systems. Data is displayed to users in real-time with dynamically updated graphics using full-motion animation.



An ordinary Web Browser is the engineering tool

Unique to WebAccess all engineering, configuration, graphics building (DRAW) and software administration (download, start and restart remote nodes) is performed using a standard Web browser. Engineers & technicians always have the right version of software needed.



Distributed Architecture

SCADA nodes run independent of any other node. Each SCADA node communicates to automation equipment using communication drivers supplied with WebAccess.

Central Database Server

The Project Node is a centralized database server. A copy of the database and graphics of all SCADA nodes is kept on the Project Node.

Redundant SCADA Nodes & COM ports

Assure continuous, reliable communications to automation equipment.

Alarm Handling Package with Pager and Email notification of Alarms.

A complete notification system to inform operators of process and equipment status including summaries, logs, sorting by priority, alarm graphic for all IO and "Text to Speech" annunciation. Schedule who receives Alarm email and pages based on shift, day of week, and calendar.

Historical and Real-Time Trending, Data Logging and Centralized Logs

12 Tags are added to a Trend display without losing history of other tags. Real-time data, alarms, and operator actions from all SCADA nodes are logged to a central ODBC database.

Scheduled Reports

A "Fill-in-the-blanks" reporting package prints average, maximum, minimum, last and totals for user-defined shifts, daily reports and monthly summary reports.

Video and audio with animation

Live full-motion video, audio, Windows Media, and other web-cams are viewed in same the graphic display as trends, alarms, pushbuttons and live data.

HMI & SCADA for Building & Facilities Automation

Scheduler

Setpoints are setback or adjusted, lights, fans, and equipment are turned on and off, based on the time, day of week and calendar.

The screenshot shows the Scheduler interface with the following data:

Time Period	Normal Hours				Extra Hours I				Extra Hours II			
	Start	Stop	Cycle On	Cycle Off	Start	Stop	Cycle On	Cycle Off	Start	Stop	Cycle On	Cycle Off
Monday	07:30	18:05	1	0	22:20	23:00	1	0	00:00	00:00	0	0
Tuesday	07:15	18:05	1	0	00:00	00:00	0	0	00:00	00:00	0	0
Wednesday	07:15	11:35	1	0	12:15	18:00	1	0	20:05	22:00	1	0
Thursday	07:15	18:00	1	0	20:00	21:45	0	0	00:00	00:00	0	0
Friday	07:15	18:00	1	0	20:00	21:45	0	0	00:00	00:00	0	0
Saturday	00:00	00:00	0	0	00:00	00:00	0	0	00:00	00:00	0	0
Sunday	00:00	00:00	0	0	00:00	00:00	0	0	00:00	00:00	0	0
Holiday	09:30	17:00	1	0	00:00	00:00	0	0	00:00	00:00	0	0

ActiveX

WebAccess uses an ActiveX control running inside Internet Explorer to provide real-time, dynamic data and graphics with full animation.

Thin Client

WebAccess provides a "true" Thin Client interface for Pocket PCs, tablet PCs, PDA and others not wishing to install our ActiveX plug-in. No special software is required.

Local Display

SCADA nodes support a non-web browser version intended for standalone architectures and control room users.

Global Access to Alarms & Data

Real-time data and alarms from all SCADA nodes in a project are viewable on all nodes.

HTML Reports

Generate HTML Reports using menu-based queries of centralized ODBC Logs based on date, time, and tag, including: real-time data, Alarm Log and Operator Action Log. Copy and paste these HTML reports to EXCEL, Word, etc.

EXCEL Import / Export

Create and modify tags in a spreadsheet using copy, paste, and other EXCEL tools or import databases from other HMI packages.

A Complete "Out-of-the-Box" solution

Pre-built displays and pop-up dialog boxes show Trends, Alarms, Overviews, and Detail displays without any graphics building.

Enhanced Security

Area of Responsibility concept restricts changes to data. Users are assigned privileges to restrict display and data access. Monitor who connects to the project and SCADA nodes via the web and the changes made.

Recipe Function

Change the value of hundreds of settings from one pushbutton.

Vector-based Graphics

Build at any display resolution and display at any other resolution. Vector-based graphics scale infinitely, provide smaller file sizes and faster downloads.

Import AutoCAD DXF

Floor plans, P&IDs and equipment drawings can be imported, edited, filled and animated.

ZOOM graphics in Run time

Vector Graphics allow users to zoom in to magnify any display up to a power of 8x.

DDE, OPC and ODBC interfaces

Microsoft communications standards to exchange data with OPC drivers, spreadsheets, databases or 3rd party software.

Scripts using Tcl

Scripts in WebAccess use the open source programming language Tcl and allow users to develop customized calculations and reports.

Customize Toolbars with Icons and animated buttons

Import Microsoft icon files from any application to build tool bars. Animate Toolbars buttons to flash, change color and text.

Ordinary Web browser

Microsoft Internet Explorer 6.0 supports all features of WebAccess.

Ordinary Web Server

Internet Information Server, a standard component in Windows 2000, XP Professional, and Server 2003, supports WebAccess.

BroadWin Technology, Inc.

San Ramon, California, USA

Phone: 925-362-4592

e-mail: support@broadwin.com

http://www.broadwin.com